



TYRE INFLATOR VALVE

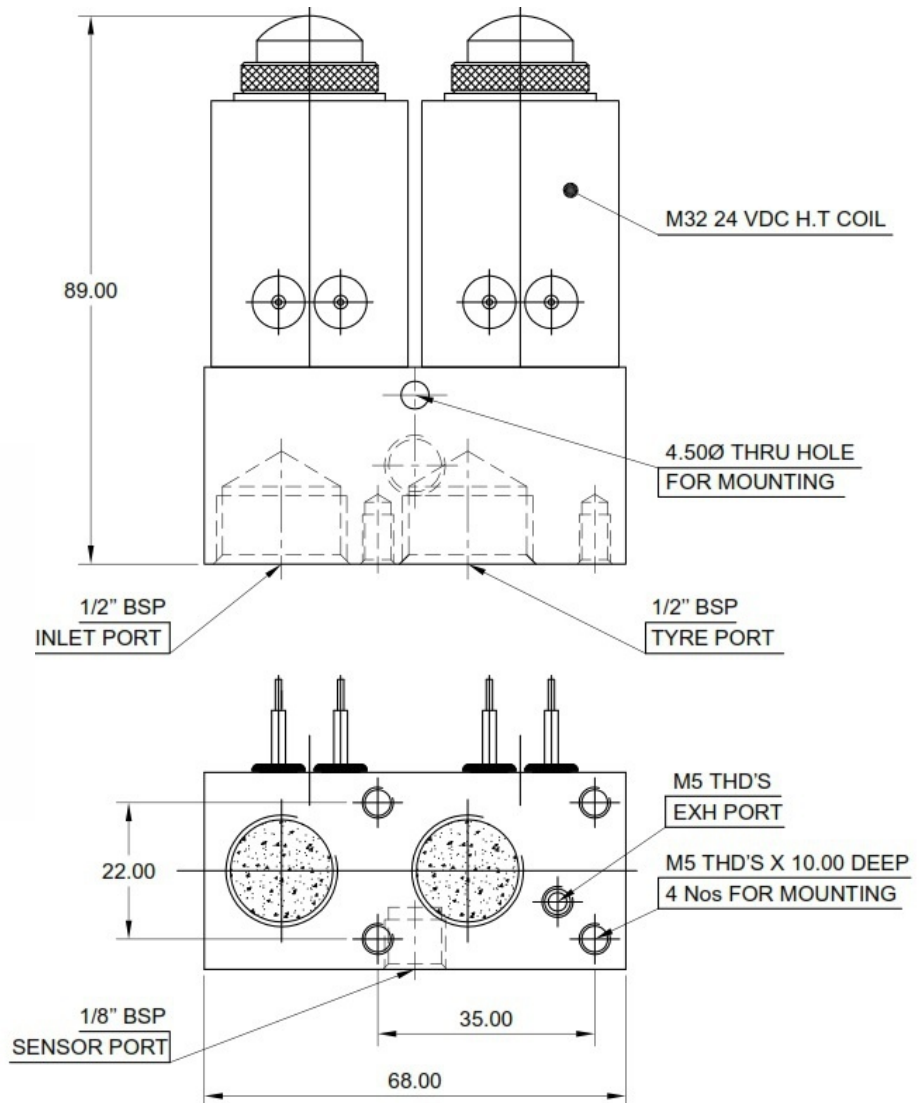
MERCURY

Mechanical Characteristic

Body	: Aluminium
Orifice	: Ø2.50mm
Ports	: G1/2" BSP Female & G1/8" BSP Female (Sensor Port)
Seals	: Nitrile Rubber
Design	: Poppet type, directly actuated
Weight	: Refer to technical data

Operating Conditions

Media	: Compressed Air (filtered 40F & lubricated)
Temperature Range	: +5° to +50°C
Pressure Range	: 0 to 10 bar
Leakage	: Bubble Tight



MODEL No.	DESCRIPTION	SYMBOL	WEIGHT (Kg.)	SEAL KIT No.
SPV1027	1/2" BSP - 2 VALVE, M32, 24 VDC COIL TYRE INFLATOR VALVE		0.60 Kgs.	SKSPV1027



TYRE INFLATOR VALVE

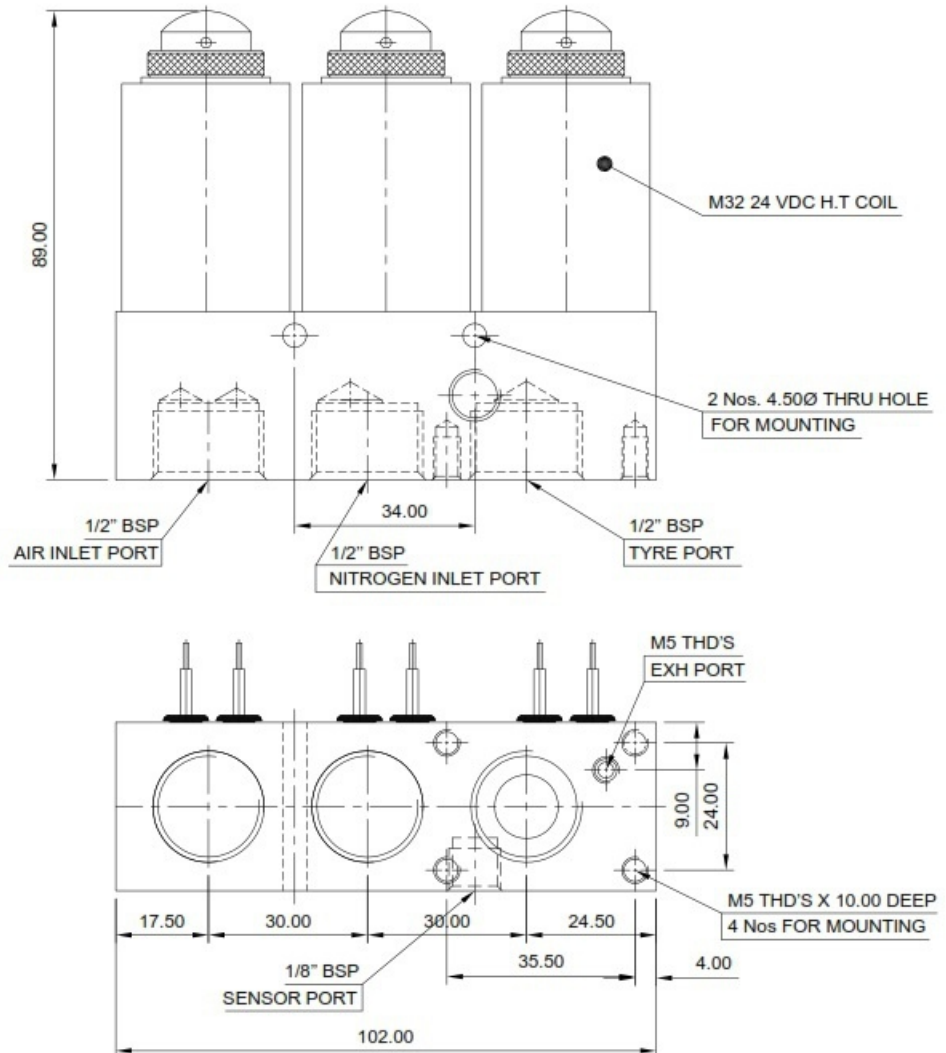
MERCURY

Mechanical Characteristic

Body	: Aluminium
Orifice	: Ø2.50mm
Ports	: G1/2" BSP Female & G1/8" BSP Female (Sensor Port)
Seals	: Nitrile Rubber
Design	: Poppet type, directly actuated
Weight	: Refer to technical data

Operating Conditions

Media	: Compressed Air (filtered 40F & lubricated)
Temperature Range	: +5° to +50°C
Pressure Range	: 0 to 10 bar
Leakage	: Bubble Tight



MODEL No.	DESCRIPTION	SYMBOL	WEIGHT (Kg.)	SEAL KIT No.
SPV1064	1/2" BSP - 3 VALVE, M32, 24 VDC COIL TYRE INFLATOR VALVE		0.90 Kgs.	SKSPV1064