



# 2/2 Dual Pressure Blow Valve for L.P , H.P & EXH

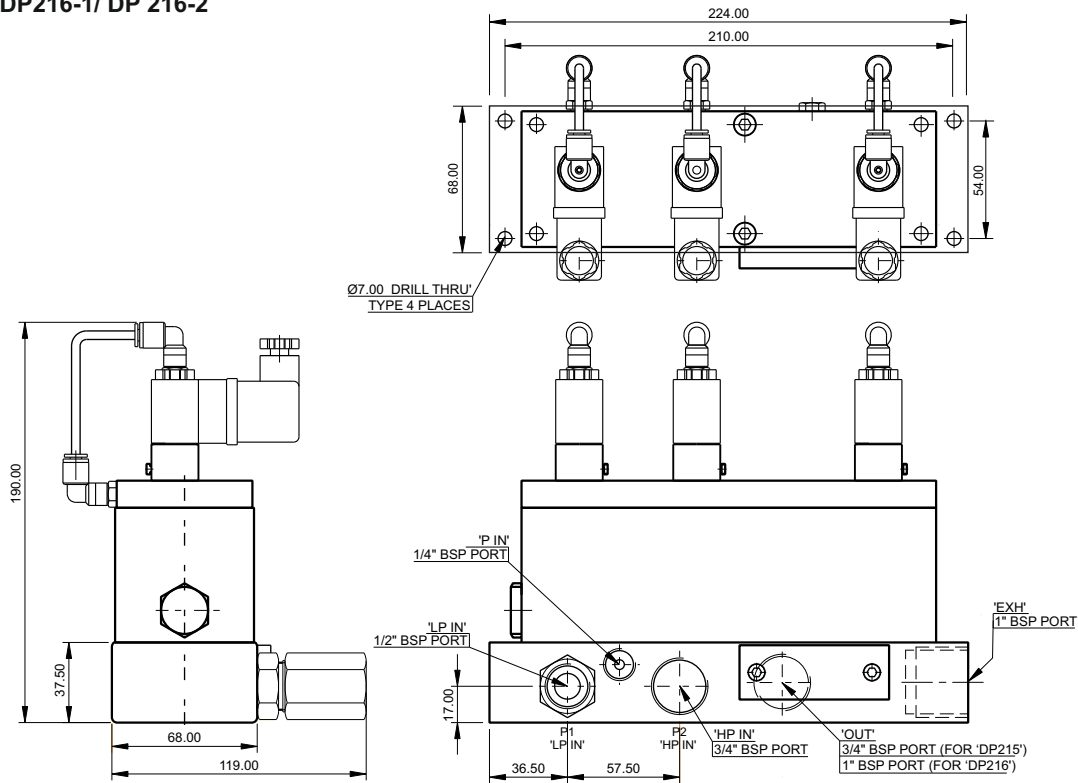
Series 'DP'



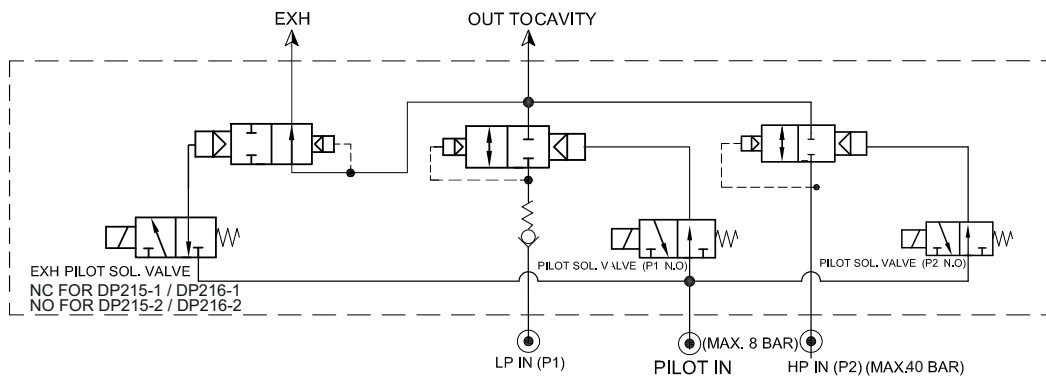
Mechanical Characteristic	
Body	: Aluminum
Orifice	: LP-12mm, H.P-16mm, EXH- 24mm
Ports	: Refer technical data.
Seals	: Polymer
Design	: Poppet type, external pilot operated.
Weight	: DP215-1/2 :-3.60 kg, DP215-1R/2R :-4.60kg DP216-1/2 :-3.60 kg, DP216-1R/2R :-4.60kg
Operating Conditions	
Media	: Air (filtered 40 $\mu$ )
Temperature Range	: +5 to +50°C
Pressure Range	: Pilot :- 6 to 8bar LP:- 2 to 20bar, HP:- 3 to 40bar
Leakage	: Bubble Tight
Electrical Conditions	
Coil Voltage	: 230 VAC / 24 VDC
Power	: DC-3W; AC-5W Hold
Duty Cycle	: Continuous
Protection	: IP 65 (as per DIN 40 050)
Connector	: Illuminated



## MODEL :- DP215-1/ DP 215-2 DP216-1/ DP 216-2



## CIRCUIT DIAGRAM MODEL :- DP215-1/DP215-2 / DP216-1/DP216-2



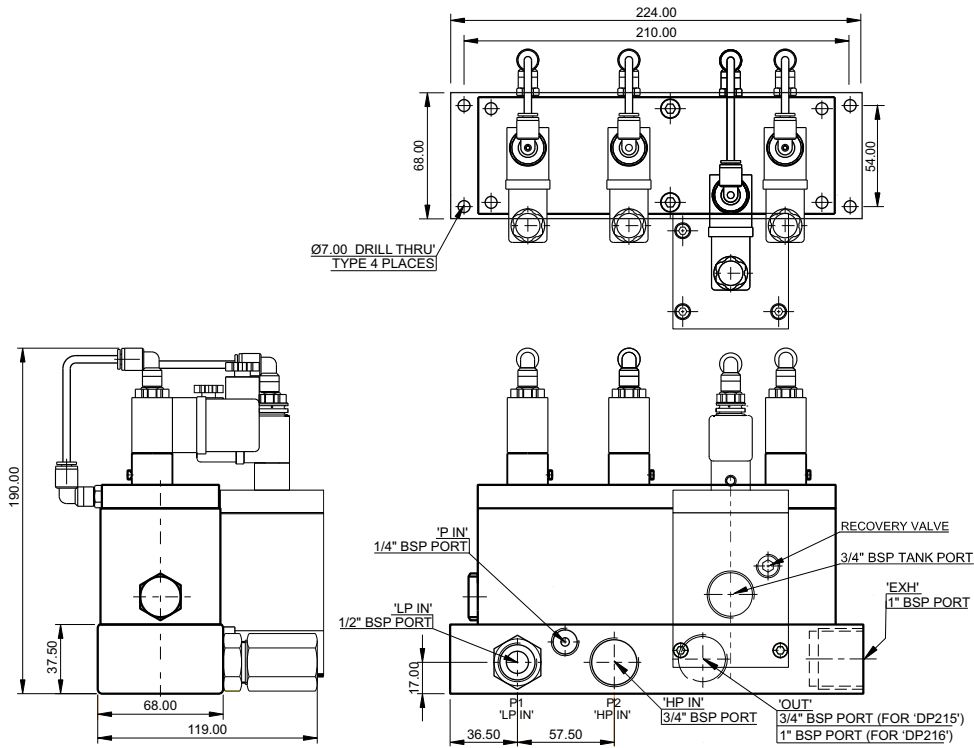


# 2/2 Dual Pressure Blow Valve for L.P , H.P & EXH

Series 'DP'



MODEL:- DP215-1R/DP215-2R  
DP216-1R/DP216-2R



## CIRCUIT DIAGRAM MODEL:- DP215-1R/DP215-2R / DP216-1R/DP216-2R

