



Power Press Product's Rotorseal Coupling

MERCURY

Mechanical Characteristic

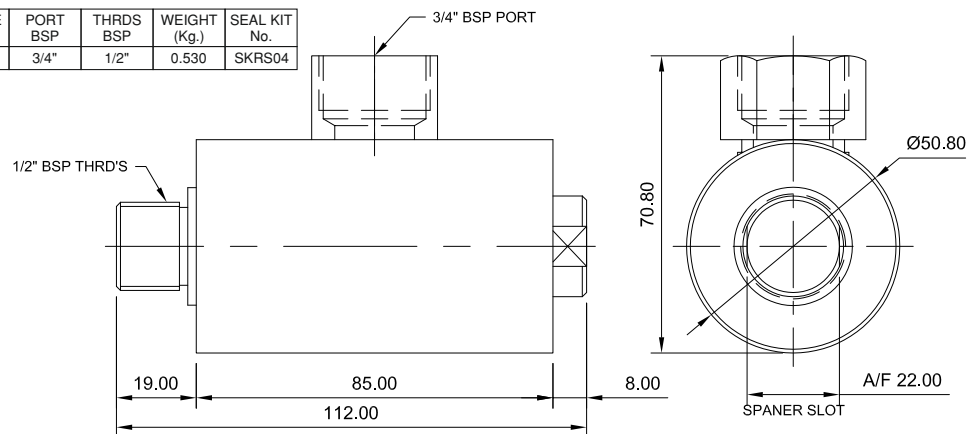
Body	: Aluminium
Orifice	: Refer to Technical data
Ports	: Refer to Technical data
Seals	: Nitrile Rubber
Weight	: Refer to Technical data
RPM	: 400 Max

Operating Conditions

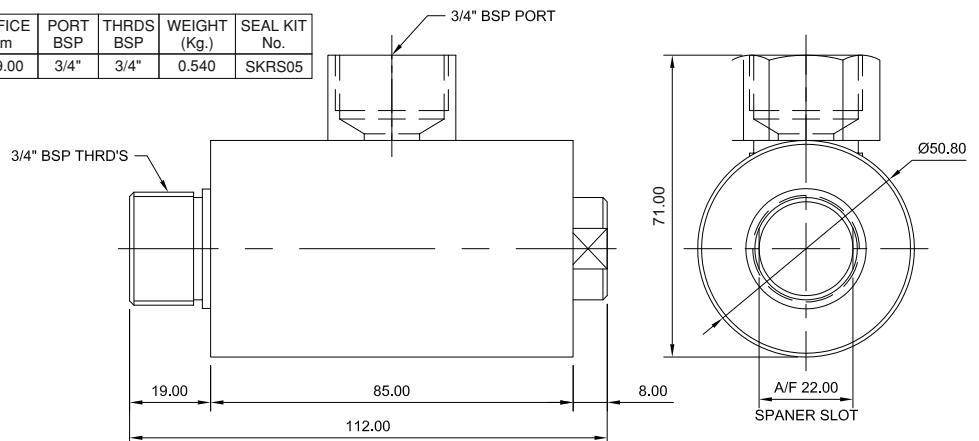
Media	: Air (filtered 40 μ & lubricated)
Temperature Range	: +5° to +50°C
Pressure Range	: 3 to 10 bar



MODEL No.	DESCRIPTION	ORIFICE mm	PORT BSP	THRDS BSP	WEIGHT (Kg.)	SEAL KIT No.
RS04	1/2" BSP ROTORSEAL COUPLING	Ø19.00	3/4"	1/2"	0.530	SKRS04



MODEL No.	DESCRIPTION	ORIFICE mm	PORT BSP	THRDS BSP	WEIGHT (Kg.)	SEAL KIT No.
RS05	3/4" BSP ROTORSEAL COUPLING	Ø19.00	3/4"	3/4"	0.540	SKRS05



MODEL No.	DESCRIPTION	ORIFICE mm	PORT BSP	THRDS BSP	WEIGHT (Kg.)	SEAL KIT No.
RS06	1" BSP ROTORSEAL COUPLING	Ø25.00	1"	1"	0.870	SKRS06

